



# Classical Numismatic Gallery

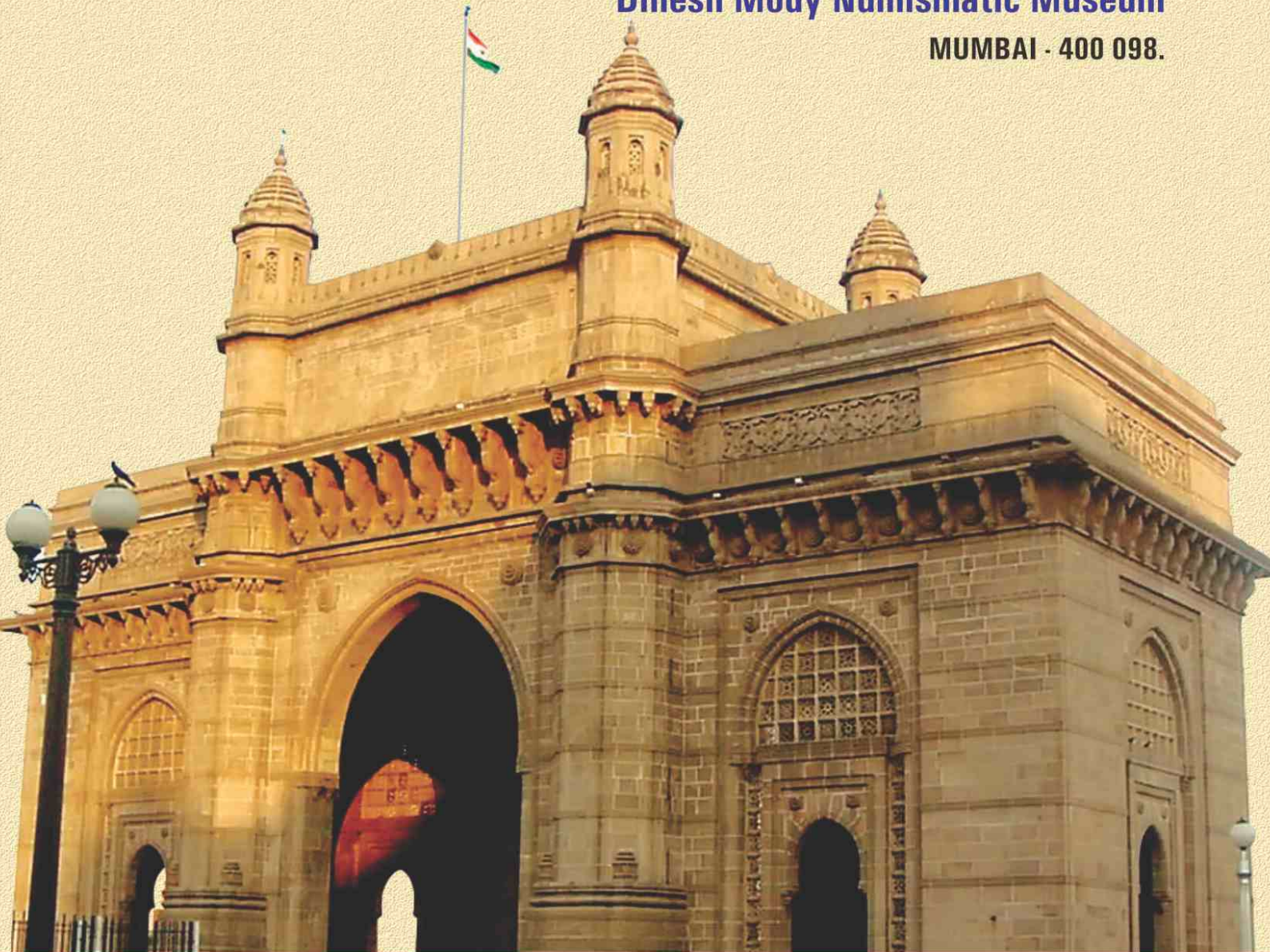
Auction of Coins, Medals, Tokens & Paper Money

**AUCTION NO. 2**

**Saturday, 18th December 2010**

**Dinesh Mody Numismatic Museum**

**MUMBAI - 400 098.**





**Date of Auction:** Saturday, 18th December, 2010, 3.00 pm onwards.

**Public View** : **By Appointment** – From 10th to 15th December 2010 - 11:00 am to 5:00 pm. At our office  
**At the Coin Fair** 17th December 2010 - 11.00 am to 6.00 pm  
18th December 2010 - 11.00 am to 1.00 pm

**Registered Office:**

**Classical Numismatic Gallery**

105, Third Eye Complex, C. G. Road, Panchvati, Ahmedabad – 380 006

Tel.: +91-79 - 2646 4850. +91-79 - 2646 4851.

Fax: +91-79 - 2646 4852

E-mail : [info@classicalnumismaticgallery.com](mailto:info@classicalnumismaticgallery.com)

[bids@classicalnumismaticgallery.com](mailto:bids@classicalnumismaticgallery.com)

### Order of Sale

Ancient.....	Lots	1 - 35
Hindu Coin of Medieval India.....	Lots	36 - 49
Sultanates.....	Lots	50 - 58
Mughals.....	Lots	59 - 136
Independent Kingdoms.....	Lots	137 - 153
Princely States.....	Lots	154 - 210
Indo-Danish.....	Lot	211
Indo-Dutch.....	Lot	212
Indo-French.....	Lot	213
Portuguese-India.....	Lots	214 - 219
East India Company.....	Lots	220 - 240
British India.....	Lots	241 - 254
Republic of India.....	Lots	255 - 256
Foreign Coins.....	Lots	257 - 268
Medals.....	Lots	269 - 277
Badges.....	Lots	278 - 279
Tokens.....	Lots	280 - 281
Paper Money.....	Lots	282 - 290

**Buyer's Premium 11.3% on Hammer** ( Including Service Tax)

plus 1% Vat on Gold and Silver Items and 5% on other metal Items.

**Antiques Licence No. 001**

**VAT TIN** – 24073501598

**CST TIN** – 24573501598

**Our Bankers:** A/c Name : **Classical Numismatic Gallery**

**HDFC Bank**, Panchvati Branch,Ahmedabad; A/c No. 15672560000671

RTGS / NEFT IFSC code: HDFC0001567

**ICICI Bank**, Shahibaug Branch, Ahmedabad; A/c No. 029405500365

RTGS / NEFT IFSC code: ICIC0000294

**Currency of Sale:** R Indian Rupees

**Academic Advisor for Cataloguing** Dr. Shailendra Bhandare. (University of Oxford, UK)

**Catalogue Prepared by** Shatrughan Saravgi & the team of Classic Numismatic Gallery.

**Please Note** : Items **over 100 years old** cannot be taken out of India without the permission of the Director General, Archaeological Survey of India, Janpath, New Delhi 110 011.

**Catalogue Price** R **200.**



# Classical Numismatic Gallery

Auction of Coins | Medals | Tokens | Paper Money

## Auction Catalogue No. 2

On  
Saturday, 18<sup>th</sup> December 2010, 3 pm onwards

At  
Dinesh Mody Numismatic museum  
Saroj Sadan, University Kalina Campus, Santacruz, East  
Mumbai

in conjunction with  
2nd Museum Coin Fair, Mumbai

Conducted by:

## Classical Numismatic Gallery

(A proprietary concern established by Shatrughan Saravagi )

(Antiques Licence No. 001)

105, 3<sup>rd</sup> Eye Complex, C. G. Road, Panchwati,  
Ahmedabad - 380 006. Gujarat. INDIA

*Tel:* +91-079-2646 4850 . 91+-079-2646 4851

*Fax:* +91-079-2646 4852

Email: [shatrughansaravagi@gmail.com](mailto:shatrughansaravagi@gmail.com) / [shatrughansaravagi@yahoo.com](mailto:shatrughansaravagi@yahoo.com)

Website: [www.classicalnumismaticgallery.com](http://www.classicalnumismaticgallery.com)



208



208



175



217



218



160



# Ancient



1. **Gold Plated (Solid)**, Ancient Earring from Saurashtra Area, 5.5 gm. Extremely Fine.

Realised R.....

Estimate: R. 4,000 - 5,000



2. **Punch-marked Coins Silver (2), Ashmaka Janapada**, Karshapana, our symbol type, elephant to left and tree in railing with a pair of two symbols punched from the same punch, uniface. *Two different varieties*

Realised R.....

Estimate: R. 4,000 - 5,000



3. **Punch-marked Coin, Archaic Series silver**, Kosala Janapada? – 2.gm. Reportedly found at Rath, dist. Jhansi, UP. a bull to left as a big mark on reverse on the coin; These coins are similar in fabric to Rajgor Series 60 - 62, attributed to Kosala Janapada but bear distinctly different obverse and reverse marks. Very Fine +, Scare.

Realised R.....

Estimate: R. 7,000 - 8,000



4. **Punch-marked Coin, Archaic Series silver**, Kosala Janapada? – 2.8.gm. Reportedly found at Rath, dist. Jhansi, UP. a bull to right as a mark on reverse on the coin, six-armed symbol on obv; These coins are similar in fabric to Rajgor Series 60-62, attributed to Kosala Janapada but bear distinctly different obverse and reverse marks. Very Fine +, Scare.

Realised R.....

Estimate: R. 8,000 - 10,000



5. **Punch Marked, Silver, (3) Three Human Figure** other different figures on obv; and rev, Very Fine, Scare. (3)

Realised R.....

Estimate: R. 1,000 - 1,200



6. **Satavahana Empire, Siri Satavahana**, (c.1<sup>st</sup> century BC), Copper Karshapana, Elephant to right, tree in railing in front, river at base, vidarbha area find. Rev Ornate Ujjaini symbol. Very Fine for type and Very Rare. (2)

Realised R.....

Estimate: R. 3,000 - 4,000



7. **Chahmanon of nadol, Skand Gupta**, Lead 3.4.gm, obv; Seated Laxmi on wielar stool, Conch Shell in middle on Rev Very Fine, Rare.

Realised R.....

Estimate: R. 2,000 - 3,000



8. **Skand Gupta** Lead, Saka.133, Garuda Seated on obv; rev, Brahmi Legend skandgupta and above is date. Very Fine, Complete legend, Scare.

Realised R.....

Estimate: R. 2,000 - 3,000



9. **Kumar Gupta, Copper, Sri Kumara. Garuda** on obv; Chandra below. Unpublish, Rare.

Realised R.....

Estimate: R. 3,000 - 4,000



10. **Kumar Gupta, Lead (4), Garuda Siting on obv; and rev, (2) Shri Kumar Gupta, (2) Skand Gupta in Brahmi (complete shri kumar gupta, Skand Gupta on all coins) Very Fine, Scare.(4)**

Realised R.....

Estimate: R. 1,500 - 2,000





11. **Satavahanas, Vasithiputra, Pulumavi**, 2.2.gm, C.AD-78-114, Silver-Portrait type with Ornate bust of the ruler to right and Brahmi Legend around on obv; Brahmi Legend on Rev; around the Central Symbols of a Hill and Ujjaini Symbols. About *Very Fine, Scarce*.

Realised R.....

Estimate: R. 4,000 - 5,000



12. **Satavahanas, Vasithiputra satakarni**, C-AD-118-147. 2.4.gm. Silver Portrait type. with Ornate bust of the ruler to right facing and Brahmi Legend around on obv; Brahmi Legend on Rev. around the Central Symbols of a Hill and Ujjaini Symbols, About *Very Fine, Scarce*.

Realised R.....

Estimate: R. 4,000 - 5,000



13. **Satavahana Satakarni**, Bell Metal, 4.gm. Junnar-Lion type a lion to Left facing and traces of Brahmi Legend on it and a three mounted hill between leg on obv; an Ujjaini Symbol on Rev, about *Extremely Fine, Very Rare*.

Realised R.....

Estimate: R. 8,000 - 10,000

## Gupta



14. **Gupta Empire, Chandra Gupta II**, Gold Dinar, 'Horseman' type Obv; King riding a caparisoned horse, moving to left, with a bow in his hand and a sword tied to his waist. 'Parama Bhagavata.....' legend between 1 and 4 o'clock and then '(Chan)d raguptah' from 8 o'clock onwards. Rev: Goddess seated in profile on a wicker-stool with lotus in left hand and a noose in the right. Legend 'Ajita Vikramah' to the right. (Altekar Class I, Var. C) *Extremely Fine, Very Rare*.

Realised R.....

Estimate: R. 50,000 - 60,000



15. **Gupta Empire, Kumara Gupta**, Gold Dinar, *Wt. 8.1.gm.* 'Horseman' type Obv: King riding a caparisoned horse, moving to left, with a bow in his hand and a sword tied to his waist. 'Gupta Kula...' legend between 1 and 4 o'clock and then '..... karmajito jayati' from 7 o'clock onwards. Rev: Goddess seated in profile on a wicker-stool with lotus in left hand, feeding a peacock with her right hand. Legend 'Ajit Mahendrah' to the right. (Altekar Class II, Var. B) About *Extremely Fine, Very Rare*.

Realised R.....

Estimate: R. 45,000 - 50,000



16. **Chandragupta II**, (c. 380-414), Gold Dinar, Lion - slayer type, legend around, king standing right drawing bow at lion which falls back with open mouth, Traces of Brahmi legend seen around. rev simhavikrama, goddess Durga seated left on lion seated left, holding long-stemmed flower in left hand and noose in the right. (BMC IX 9, Altekar pl. VI, 6). *Very Fine, Rare.*

Realised R.....

Estimate: R. 70,000 - 80,000



17. Gupta Empire, Chandra Gupta II, Gold Dinar, Wt. 7.9 gm. 'Lion-slayer' (combatant) type. Obv; King shooting a Lion with a bow and arrow, the lion falls back with an arrow in its mouth. Traces of Brahmi legend '.....rendra Chandra pra...' seen between 1 and 4 o'clock. Rev: Goddess seated facing on a lion, with lotus in left hand and a noose in the right. Brahmi legend '(Simha) Vikramah' in the right field (Altekar Class I, Var. C, but the King is more animated) *Very Fine, Very Rare.*

Realised R.....

Estimate: R. 1,00,000 - 1,20,000



18. Gupta Empire. **Chandragupta II Vikramaditya**. (C, AD 380-413). **Gold Dinar**, Wt. 7.7 gm. **Archer type**. Chandragupta, nimbate, standing left, holding arrow in right hand, left hand holding bow at top; Chandra below arm, garudadhvaja to left, rev Sri-Lakshmi seated facing on lotus, holding diadem in her right hand, left hand outstretched, holding lotus; tamgha to left legend Sri vikramah. (Coinage of the Gupta Empire, Altekar: Plate IV no.15). *Very Fine, Scarce.*

Realised R.....

Estimate: R. 20,000 - 22,000



19. **Chandragupta II Vikramaditya**. (C-AD- 380-413). Gold Dinar, 7.7 gm, Archer type. Chandragupta, nimbate, standing left, holding arrow in right hand, left hand holding bow at top; Chandra below arm, garudadhvaja to left, rev Sri-Lakshmi seated facing on lotus, holding diadem in her right hand, left hand outstretched, holding lotus; tamgha to left legend Sri vikramah. (Coinage of the Gupta Empire, Altekar: Plate VII no.6). *Very Fine, Scarce.*

Realised R.....

Estimate: R. 22,000 - 25,000



20. **Gupta Empire. Chandragupta II Vikramaditya**. (C-AD- 380-413). **Gold Dinar**, 7.8 gm, Archer type. Chandragupta, nimbate, standing left, holding arrow in right hand, left hand holding bow at top; Chandra below arm, garudadhvaja to left legend **Devasri Maharajadhiraja**, Rev **Sri - Lakshmi** seated facing on lotus, holding diadem in her right hand, left hand outstretched, holding lotus; tamgha to left legend **Sri vikramah**. (Coinage of the Gupta Empire, Altekar: Plate IV no.16). *Very Fine +, Scarce.*

Realised R.....

Estimate: R. 24,000 - 28,000





21. **Chandragupta II, Vikramaditya**, (c. AD 380-413) Gold Dinar. 7.7.gm, Archer type, Chandragupta, nimbate, standing facing, head right, holding arrow and bow at top; Garuda standard to left; Chandra to outer right along bow string / Lakshmi seated facing on lotus, holding diadem and lotus; tamgha to left; Sri vikramah to right. BMC Guptas unlisted, Alk-  
 etar class II, variety L, Pl V, 14 but the position of bow different. Very fine+, Very Rare. This coin is much different than the listed varieties as the king holds the bow with string close to him. Coins of this type with bigger flans read the legend Devasri Maharajadhiraja Sri Chandra.

Realised R.....

Estimate: R. 40,000 - 50,000



22. **Chandragupta II Vikramaditya**, (C- AD- 380-413) Gold Dinar, 7.7.gm. Archer type, Chandragupta, nimbate, standing left, holding arrow in right hand, left hand holding bow at top; to left, Garuda standard; Chandra below left arm, rev Lakshmi, nimbate, seated facing on lotus in Arddhparayanka pose (left foot tucked up under her, right leg hanging down), holding diadem in her right hand, left hand outstretched, holding lotus; tamgha to left; Sri vikramah to right. BMC Guptas unlisted, (Alk-  
 etar class II, variety G, 17) *Very Fine and Extremely Rare.*

Realised R.....

Estimate: R. 1,00,000 - 1,20,000

*Only four published coins have been known before, all from the Bayana hoard; but this Coin has been found recently in trade.*



23

24

23. **Gupta Empire, Chandragupta II, Vikramaditya**, (C- AD- 380-413). Gold Dinar, 7.7.gm. Archer type. Chandragupta, nimbate, standing left, holding arrow in right hand, left hand holding bow at top; Chandra below arm, garudadhvaja to left legend Devasri Maharajadhiraja, rev Sri-Lakshmi seated facing on lotus, holding diadem in her right hand, left hand outstretched, holding lotus; tamgha to left legend Sri vikramah. (Coinage of the Gupta Empire, Altek-  
 ar: Plate IV no.16). *Very Fine + Scare.*

Realised R.....

Estimate: R. 25,000 - 30,000

24. **Chandra Gupta II, Gold Dinar, Archer type**, 7.9. gm, king standing with a bow in his left hand and sacrificing at an alter on obv; goddess Lakshmi seated on a lotus on rev, *Very Fine, Scare.*

Realised R.....

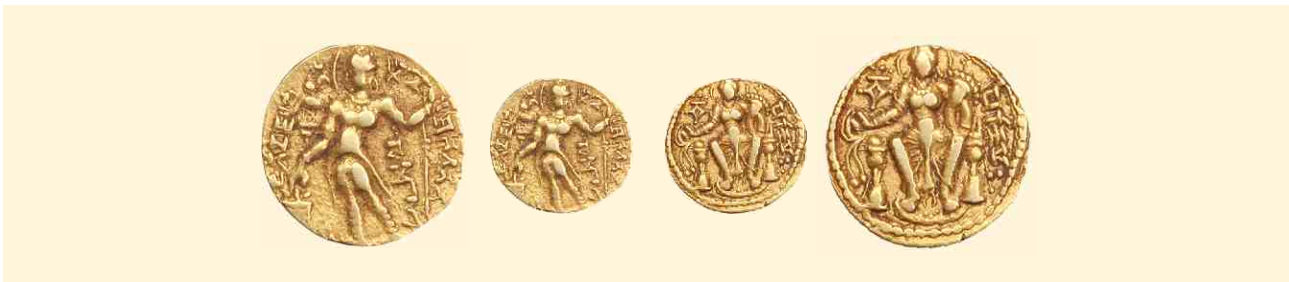
Estimate: R. 20,000 - 25,000



25. **Samudragupta** (C-335-380), Gold Dinar, 7.5 gm, **Battle-axe type**, Samudra below arm of the king standing right holding battle-axe (parashu), attendant and crescent topped standard in front of him, rev Goddess seated facing on throne holding diadem and lotus bud, tamgha to left and legend 'Krtanta Parashu' in the right field. (*Altekar pl II, 15*) Very Fine, Extremely Rare. This is the Class II type of battle-axe coin of Samudragupta. The other type has king standing to right which is a commoner class. The coin offered here is a much rarer version of the Parashu type.

Realised R.....

Estimate: R. 2,00,000 - 2,50,000



26. **Gupta Empire, Samudragupta**, (c AD 335-380), Gold Dinar, 7.8 gm. Archer type. Samudragupta, nimbate, standing left, holding standard and sacrificing over altar; Garuda standard behind altar Brahmi legend around. Rev goddess Sri-Lakshmi, nimbate, seated on throne with two legs, holding diadem and cornucopiae; tamgha to left, legend Parakramah in the right field (BMC I, 14; Coinage of the Gupta Empire, Altekar: Plate II no.3). *Very Fine+, Extremely Rare.*

Realised R.....

Estimate: R. 1,00,000 - 1,25,000

The invincible king who had won victories on a hundred battle fields and conquered the enemies wins the heaven: samara shata vitata vijayo jita ripurajito divam jayati. The firm establishment of the Gupta Empire by Samudra has produced the finest Gold coins of the Classical Golden age of Indian history.



27. Gupta Empire. Samudragupta. (c AD 335-380). Gold Dinar, Wt. 7.2 gm. Archer type. Samudragupta, nimbate, standing left, holding standard and sacrificing over altar; Garuda standard behind altar Brahmi legend around. Rev goddess Sri-Lakshmi, nimbate, seated on throne with two legs, holding diadem and cornucopiae; tamgha to left, legend Parakramah. (BMC I, 8; Coinage of the Gupta Empire, Altekar: Plate II no.5). *Very Fine.*

Realised R.....

Estimate: R. 20,000 - 25,000



28. Gupta Empire. Samudragupta. (C -AD- 335-380). Gold Dinar, Wt. 7.2 gm. Archer type. Samudragupta, nimbate, standing left, holding standard and sacrificing over altar; Garuda standard behind altar Brahmi legend around. Rev goddess Sri-Lakshmi, nimbate, seated on throne with two legs, holding diadem and cornucopiae; tamgha to left, legend Parakramah. (BMC II, 1; Coinage of the Gupta Empire, Altekar: Plate II no.8). *Very Fine, Scarce.*

Realised R.....

Estimate: R. 22,000 - 25,000



29. Gupta Empire. Samudragupta. (C- AD- 335-380). Gold Dinar, *Wt. 7.7 gm*, Archer type. Samudragupta, nimbate, standing left, holding standard and sacrificing over altar; Garuda standard behind altar Brahmi legend around. Rev goddess Sri-Lakshmi, nimbate, seated on throne with two legs, holding diadem and cornucopiae; tamgha to left, legend Parakramah in the right field (BMC II, 2; Coinage of the Gupta Empire, Altekar: Plate II no.7). *Very Fine +, Rare.*

Realised R.....

Estimate: R. 28,000 - 30,000



30. **Kumar Gupta**, 1st (c.414-455) AD **Gold, Dinar Coin.** 8.0 gm. Archer type kumar below arm of king standing. left holding bow and arrow, Garuda Standard in field left, the body of the king is severely arched, the Nimbate diademed head. shows with hair of a style only associated with this issue Rev; Sri Mahendra, goddess Lakshmi seated facing on lotus holding long-stemmed flower and ribbon, *Very Fine +, Rare.*

Realised R.....

Estimate: R. 35,000 - 40,000



31. **Chandragupta III**, (c. 450-455 AD), Gold Dinar, 8.1 gm, Archer type, Chandra below arm of standing king to left, legend around, bow in left hand, right hand holding arrow, Garuda standard in field left, rev **Sri Vikrama**, goddess Sri-Lakshmi seated on lotus holding long-stemmed lotus flower. The additional symbol on this coin is a **Sun type** symbol in front of the king's face. It is made up of a dot within circle encircled by eight dots. (Similar to BMC pl. VII, 7, Bayana Hoard pl. X, 2). *Very fine, Extremely Rare.*

Realised R.....

Estimate: R. 50,000 - 60,000

Such a coin with a Sun type symbol in front of the king's face exists in heavier weight standard of 8.5g. Because of the weight and the crudeness, it has been attributed to Chandragupta III by many scholars. (See Ellen Raven, Gupta Gold coins with Garuda Banner, p. 317). The style of the coin and its impure contents show that this must be a product of a later Chandragupta, much later than the great Chandragupta II. The coin offered here has not been listed in major catalogues and hence is *Extremely Rare.*



32. Bengal Shashanka Deva, Circa AD 600-635. Base Gold Dinar, 9.0 gm, Shiva, Nimbate, seated facing on recumbent bull left; moon to left; Brahmi Sri Sha to right, jaya below Rev, Abhisheka Lakshmi, nimbate, holding lotus, seated cross-legged on lotus; two elephants with raised trunks at sides. well Struck (BMC Guptas VI-17; Mitch ATEC 5224). *Very Fine, well centre struck. Scarce.*

Realised R.....

Estimate: R. 25,000 - 30,000





33. **Post-Gupta, Coinage of Bengal, Gold Dinar**, 6.4.gm, Raja Jadamarah, imitating the Gupta Coinage. King standing left holding bow and arrow, standard in field, rev female figure standing right in tribhanga pose holding trident shaped object in left hand, tamgha in field, crude legend Vira Jadamara on left. (See Rhodes-Bose, Assam, p.67). *Extremely Fine, Rare.*

Realised R.....

Estimate: R. 30,000 - 40,000



34



35

34. **Western Kshatrapas, Nahapan, Silver Dramma**, (2) Tri-legend Type, With Greek, Brahmi and Kharoshthi legend, bust on obv; thunderbolt and arrow with legends on Rev; *Very Fine, Scarce.* (2)

Realised R.....

Estimate: R. 2,000 - 2,500

35. **Lesser Satavahanas, Northern Karnataka (Banawasi) region, copper coin of Chutukulananda**, c. 250 - 300 AD. Obv: 8-arched hill with legend '(Chu)tukula...' above. Rev: Tree-in-Railing. The round and heavy lead coins of Chutukulananda are very common. This being a rectangular lead copper coin is unusual and *very rare.*

Realised R.....

Estimate: R. 3,000 - 4,000

## Hindu Coins of Medieval India



36. **Chauhans of Ranastambhapura, (Ranthambhor) Hammira Copper** 4.7.gm. obv; Devanagari hasa/59/45 in two Lines. within Square Circle Dotted Border, Rev, Devanagari Sri at Center of fire alter derived from Dadhaiya Paisa Re, living without Silver, Johan Deyell No. 368. *Very Fine, Rare.*

Realised R.....

Estimate: R. 1,000 - 1,200



37. **'Harikela' coinage of Chittagong region**, 2.8.gm, Silver repousse', Bracteate, c. 1000 AD, with Bull facing right and legend 'Baraka' or 'Dharaka' in retrograde inscribed above. bell around neck; crescent behind, rev Incuse of obverse. *Very Fine, Very Rare* in specially such a broad flan.

Realised R.....

Estimate: R. 20,000 - 25,000



38. **Rashtrakuta, King Krishna II, Shri Shubhtunga**, 4. gm, AD 878 to 914, obv; Garuda Seated on Lotus Rev; Nagri Inscription Shri Shubhtunga and below a Conch Shell. The Rashtrakutas were a Dynastic Clan that ruled Parts of Central & Northern India from 5th Century, Extremely Fine, *Extremely Rare*.

Realised R.....

Estimate: R. 5,00,000 - 7,00,000

Only 2-3 Specimen's are Known among them one is in the British Museum. For more Detail Please **See the Article of Dr.Shailendra Bhandare. Publish in the Souvenir of Mumbai Coin Society - 2010**



39. **HINDU COIN OF MEDIVAL INDIA**, Eastern Chalukyas, Rajyabhusana, Gold Pagoda 3.6 gm, Uniface, 10-11 Century. Centre Punch Lion Facing Left and other 8 Symbols around. All Eastern Chalukya Pagodas are Struck on very broad thin flan, Deep Strike. *Extremely Fine Very Rare*.

Realised R.....

Estimate: R. 90,000 - 1,00,000



40. **HINDU COIN OF MEDIVAL INDIA**, Eastern Chalukyas, Rajyabhusana, Gold Pagoda 3.8 gm, Uniface, 10-11 Century. Centre Punch Lion Facing Left and other 8 Symbols around. All Eastern Chalukya Pagodas are Struck on very broad thin flan, Deep Strike. *Extremely Fine Very Rare*.

Realised R.....

Estimate R. 90,000 - 1,00,000



41. **Yadaves of Devagiri, Singhana Deva**, Gold, Padma Tanka, 3.8 gm, (AD 1200 - 1247), Centre Punch of Lotus Flower, Conch shell and other Punches. *Very Fine*.

Realised R.....

Estimate R. 9,000 - 10,000



42. Telugu Chodas of Nellore, 3.5.gm, c. 1100 - 1200 AD, '**Bujaba**' series, Gold Gadyana bearing 9 punches but only four visible –two Kannada 'Shri', one Kannada legend 'Bujaba' and one 'Sun-and-Moon' symbol. *Extremely Fine, Rare.*

Realised R.....

Estimate: R. 12,000 - 15,000

43. **Chalukyas of Kalyani**, 3.7.gm, feudatories in Western Maharashtra, c. 1100 - 1200 AD, Gold Gadyana bearing thirteen punches: 'running Garuda' in the centre, five 'lions', two '**Sri**' in Kannada script and four with Kannada legend '**Suba**'. about *Extremely Fine Rare* in this condition.

Realised R.....

Estimate: R. 15,000 - 20,000



44. Chalukyas of Kalyani, 3.7.gm, Jayasimha II, Jagadekamalla, c.1100 - 1200 AD, Gold Gadyana bearing 9 punches – five 'lions', two Kannada 'Shri', one bearing Kannada legend 'Jaga...' and one indistinct. A punch of a 'running human figure' on the reverse. *Fine +, Scarce.*

Realised R.....

Estimate: R. 12,000 - 15,000



45. Telugu Chodas of Nellore, as feudatories of Chalukyas, '**Bujaba**' series, 3.5.gm. c. 1100-1200 AD, Gold Gadyana bearing 9 punches – five 'lions facing right', two Kannada 'Shri', one Kannada legend 'Bujaba' and one 'Sun-and-Moon' symbol. *Extremely Fine, Rare.*

Realised R.....

Estimate R. 15,000 - 20,000

46. Telugu Chodas of Nellore, as feudatories of Nolambas, 3.5.gm, c. 1100 - 1200 AD, Gold Gadyana bearing 9 punches – 'lotus' in the centre, four 'seated Nandi' illustrated in groups of dots, two Kannada 'Shri', one Kannada legend in four/five letters (truncated beyond restoration) and one 'Sun-and-Moon' symbol. *Extremely Fine, Rare.*

Realised R.....

Estimate: R. 15,000 - 20,000



47. **Chalukya Fanam**, 0.400.gm, Lion, Facing left in a Circle, above is Fish, Sun and Moon Symbol *Extremely Fine, Rare.*

Realised R.....

Estimate: R. 6,000 - 8000

48. Gold Dubble Fanam, 0.800.gm, obv; Garuda Sitting. Rev; Trishul. about *Extremely Fine, Rare.*

Realised R.....

Estimate: R. 8,000 - 10,000





49. Orissa, Gold Fanam, 0.400.gm, obv; bull Sitting Facing Right Rev; Legend Nagari Word *Extremely Fine, Scarce.*

Realised R.....

Estimate: R. 2,000 - 3,000

## Sultanates

### Delhi Sultan



50. **Delhi Sultan**, Gold Dinar 12.8.gm, Muhammad bin Tughlua, Hadrat Delhi Mint, Al - wathia Type. (G/G, D 331) *Very Fine +, Scarce.*

Realised R.....

Estimate: R. 28,000 - 30,000

### Gujarat Sultan



51. **Sultans of Gujarat, Mahmud Shah I**, (1458 / 9 - 1511), **Gold Tanka**, 11.5 gm, OBV; Within dotted circle *Mahmud Shah al - Sultan bin Muhammad Shah Khallada Mulka* Rev: Within dotted circle *Al-Wathiq ba-Tayid al-Rahman Abu al-Fath Nasir al-Dunya wa al-Din* Unpublished, not listed in Goron & Goenka. This coin has the same reverse design as Tankas of Muhammadabad mint (G&G G-76-78) and the obverse gives the name of Mahmud's father Muhammad as on G&G G-82. It, however, has no mint or date. As such this should be considered as a new and hitherto unreported type. *Very Fine + Extremely Rare.*

Realised R.....

Estimate: R. 1,00,000 - 1,25,000



52. **Sultans of Gujarat, Mahmud Shah I**, (1458/9-1511), Gold 1/2 Tanka, 5.5 gm Obv: in circle – *Allah Rabbi* ('Allah the Lord') in Tughra with date 906; around – *Hamd ba-Mahmud Man Geh ba-'Alam Rasad* ('Blessings from Mahmud may be spread around the World) Rev: Arranged in a circular fashion – *Sikkah Am Az Bandageest Nusratam az Qadir Ast.* ('The Coin comes from the Slave but the Victory comes from the God') Goron & Goenka list a Tanka of this type (G&G 80), however they do not give its weight. If we consider it to be that of a full Tanka, this coin weighing half as much must be regarded as unique and unreported. It is a significant coin for the Sultanate series, bearing poetic legends like no other coin does. A unique octagonal full Tanka with same legends is in the British Museum collection. *Extremely Fine. Unique.*

Realised R.....

Estimate: R.5,00,000 - 7,00,000



53. Gujarat Sultan Nasiruddin Mahmud I, Silver Tanka 11.gm, Al Sultan Mahmud Shah Reading in Scalloped Circle Date 903. (G&G G-130), about *Very Fine*,

Realised R.....

Estimate: R. 2,000 - 3,000



54. Gujarat Sultan, Nasir Al din Sikander Shah, Silver Tanka, 6.9 gm, AH 932, G&G G-333, *Extremely Fine, Extremely Rare*.

Realised R.....

Estimate: R. 75,000 - 90,000



55. Ghiyath al din Ahmed III, Silver Double Tanka, 14.50. gm, AH.964, G&G G-518, *Very Fine, Scarce*.

Realised R.....

Estimate: R. 3,000 - 4,000

### **Malwa Sultan**



56



57

56. **Malwa Sultan**, Ghiyath Shah, Gold Tanka, 11.1.gm, AH 898, G&G M-67, Broad flan with haf side doted border on obv; about *Extremely Fine, Rare*.

Realised R.....

Estimate: R.. 30,000 - 35,000

57. Ghiyath Shah, Gold Tanka, 11.1gm, , AH 892, G&G M-67. *Very Fine, Scarce*.

Realised R.....

Estimate: R.. 28,000 - 30,000



58. Muhammad Bin Muzaffar, Silver Tanka, 7.1.gm, AH 963, Mandu Mint, G&G M-230, *Very Fine, Scarce*.

Realised R.....

Estimate: R. 1,000 - 1,200

# Mughals

## *Kamran*



59. **Kamran Mirza**, Silver, Shahrukhi no mint Visible. *Very Fine* for the type.

Realised R.....

Estimate: R. 2,200 - 2,500

## *Akbar*



60. Akbar, Gold Mohur, AH 981, Dar Ul Sultanate, **Ahmedabad Mint**, Full Mint, on coin, KM # 106.2, about *Extremely Fine*, well Centre Struck, Rare.

Realised R.....

Estimate: R. 50,000 - 60,000



61. Akbar, Gold Mohur, AH 971, **Mint Agra**, KM # 105.1, *Very Fine, Scarce*.

Realised R.....

Estimate: R. 28,000 - 30,000



62. Akbar, Silver Rupee, **Lahore Mint**, Ilahi Month, Farwardeen Ilahi, 48, Rev, Octagonal, Border, KM # 94 - 1. *Very Fine*.

Realised R.....

Estimate: R.. 3,000 - 4,000



63. Akbar, Silver Rupee, **Patna mint**, Month Isfandarmunj, Ilahi, 43 Broad flan Dotted Border, KM # 93.14, *Ver Fine +, Scarce*.

Realised R.....

Estimate: R. 8,000 - 10,000





64



65

64. Akbar, Silver Rupee, **Burhanpur Mint**, Ilahi Mihir, KM # 93-7. *Very fine, Scarce.*

Realised R.....

Estimate: R. 2,000 - 3,000

65. Akbar, Silver Rupee, **Agra Mint**, Ilahi Month, Farwardin Ilahi - 44, Broad Flan Dotted Border , KM # 93.1, *Very Fine.*

Realised R.....

Estimate: R. 2,500 - 3,000



66



67

66. Akbar , Silver Rupee, AH 984, **Patna Mint**, KM # 80.16, *Very Fine, Scarce.*

Realised R.....

Estimate: R. 2,000 - 3,000

67. Akbar, Silver Rupee, **Ahmedabad Mint** , Month Mihir, Ilahi 47, Rev; Octagonal Borders, Allahu Akbar Type KM # 94.2, *Very Fine, Scarce.*

Realised R.....

Estimate: R. 2,500 - 3,000



68



69

68. Akbar, Silver, Square Rupee, **Urdzafar Qarin Mint**, Alfa, KM # 82.8, *Very Fine, Scarce.*

Realised R.....

Estimate: R. 1,000 - 1,200

69. Akbar, Silver, Square Rupee, AH-988, Dar Ul Sultan, **Fathepur Mint**, KM # 82.2, *Very Fine.*

Realised R.....

Estimate: R. 8,00 - 1,000



70. Akbar , Silver Mahmudi, Lakhi (Brokage), AH 1019 , KM # 72.1 , *Very Fine, Rare.*

Realised R.....

Estimate: R. 2,000 - 2,500



71. Akbar, Silver Rupee , Tir Month Ilahi 42, KM # 90 , *Very Fine, Scare.*

Realised R.....

Estimate: R. 1,000 - 1,200

## Jahangir



72. **Jahangir**, Silver, **Ahmedabad Mint**, Zodiac, Rupee, Taurus Sign, 11.1.gms, AH 1027, KM # 150.5, Deep test mark on rev, *Fine , Rare.*

Realised R.....

Estimate: R. 10,000 - 12,000



73



74

73. Jahangir Heavy, Silver Rupee, 13.8.gm, **Ahmedabad Mint** , AH 1015, R.Y.2, KM # 152.2, *Very Fine, Scare.*

Realised R.....

Estimate: R. 4,000 - 5,000

74. Jahangir, Silver ,1/4 Rupee, Nisar , **Burhanpur mint**, AH xx21, R.Y. 31, ( Mismatched R.Y. ) KM # 163.3, *Very fine +, Rare.*

Realised R.....

Estimate: R. 30,000 - 35,000



75. Jahangir, Silver Rupee, **Akbarnagar Mint**, AH 1021, Month Ardibihist, **Nur al din** type, KM # 145.4, *Very Fine, Scare.*

Realised R.....

Estimate: R. 5,000 - 7,000



76. Jahangir, Silver Rupee, Sawai, 14.27.gm, **Burhanpur Mint**, R.Y.5, Bold Strike KM # 158.4, *Extremely Fine, Rare.*

Realised R.....

Estimate: R. 15,000 - 18,000



77

77. Jahangir, Silver Rupee , (2) Both **Ahmedabad mint**, Muzaiyan & Inayat, cauplet AH 1025, 1029, KM # 149.2, 149.4. *Extremely Fine, Scare.*

Realised R.....

Estimate: R. 4,000 - 5,000



78. Jahangir , Silver Rupee, **Jalnapur Mint**, AH 1014, Sakhat-Nurani Type, KM # 149.11, *Fine +, Rare.*

Realised R.....

Estimate: R. 9,000 - 10,000



79. Jahangir, Silver Rupee, (12) Complete Month Set **Patna Mint**, KM # 145.2, Very Fine, Scare. (12) It is Difficult to get complete month set.

Realised R.....

Estimate: R. 28,000 - 30,000



80. Jahangir , Silver Rupee, **Ahmedabad mint**, Couplet Muzaiyan, month, Azar AH 1026, KM # 149 - 2, *Very Fine +.*

Realised R.....

Estimate: R. 1,000 - 1,200





81. Jahangir ,Silver, Rupee, **Ahmedabad Mint**, Couplet Muzaiyan, month Di, AH 1023, KM # 149.2. *Extremely Fine +, Scare.*

Realised R.....

Estimate: R. 2,000 - 2,500

### ***Jahangir As Salim***



82



83

82. **Jahangir as Salim**, Silver Rupee, **Ahmedabad Mint**, Month Azar, KM # 140 -1, *Very Fine, Scare.*

Realised R.....

Estimate: R. 2,000 - 2,500

83. Jahangir As Salim, Silver Rupee, **Ahmedabad Mint**, Month, **Farwardin**, R.Y.2, KM # 140 -1. *Very Fine+*.

Realised R.....

Estimate: R. 2,200 - 2,500

### ***Shah Jahan***



84. **Shah Jahan**, Gold Mohur AH 1034, **Burhanpur Mint**, KM # 254.2, *Very Fine + Scare.*

Realised R.....

Estimate: R. 35,000 - 40,000



85. Shah Jahan, Gold Mohur, AH-1057, R.Y.20, **Lahore Mint**, KM # 260-11, *Very Fine +.*

Realised R.....

Estimate: R. 28,000 - 30,000



86. Shah Jahan, Gold Mohur, Month Azar, R.Y.2, **Surat Mint**, *Very Fine + Scare.*

Realised R.....

Estimate: R. 40,000 - 50,000



87. Shah Jahan, Silver 1/4 Rupee, Nisar, **Baldat Burhanpur Mint**, R.Y .3, KM # 240.9, *Very Fine +, Rare.*

Realised R.....

Estimate: R. 25,000 - 30,000



88



89

88. Shah Jahan, Silver, 1/2 Rupee, **Surat Mint**, KM # 213.2, *Very Fine,*

Realised R.....

Estimate: R. 1,000 - 1,200

89. Shah Jahan, *Silver, Rupee, Surat Mint.* 11.5.gms, AH 1037, R.Y.Ahd, Rev, Shah Jahan, with "Raij" at Top, KM # 221.1 *Very Fine.*

Realised R.....

Estimate: R. 1,500 - 1,800



90. Shah Jahan, 1/2 Rupee Silver, **Junagadh Mint**, Central legend within Square, *Very Fine +, Very Rare.*

Realised R.....

Estimate: R. 4,000 - 5,000



91. Shah Jahan, Silver 1/2 Rupee, (2) **Surat Mint**, *Very Fine. (2.Different)*

Realised R.....

Estimate: R. 1,800 - 2,000



92. Shah Jahan, Silver Rupee, AH 1065, Daulatabad Mint, KM # 235.10 *Extremely Fine.* complete mint on coin.

Realised R.....

Estimate: R. 2,500 - 3,000



93



94

93. Shah Jahan, Silver, Rupee, **Surat Mint**, AH 1057. R.Y.21, obv; and Rev, Central Leg. within, Foliated Quater Foil, *Very Fine +.*

Realised R.....

Estimate: R. 1,000 - 1,200

94. Shah Jahan Silver Rupee. AH. 1027, R.Y.21. **Surat mint**, nice Coin KM # 230.3 *Very Fine, Scarce*.

Realised R.....

Estimate: R. 1,500 - 2,000



95. Shah Jahan , Silver, AH. 1041, Sahib Qairan type, **Multan Mint** ,KM # 227.8, about *Extremely Fine, Scarce*.

Realised R.....

Estimate: R. 3,000 - 3,500



96. Shah Jahan, Silver Rupee, AH 1065 R.Y. 29, **Junnar Mint**, Extremely Fine, with luster. Unpublished, *Ex Rare*.

Realised R.....

Estimate: R. 80,000 - 1,00,000

Junnar ( 19 10 ' N; 73 53' E ) **Taluka Junnar**, District Pune is Located at a Distance of 96 KM from Pune and on the Southern bank of River Kukdi.

Junnar has the Largest number of Excavations numbering over 200 Independent. Excavations and Spread over the four hills. All the Excavations belong to the Hinayana Phase and are datable from mid 3rd Century A. D. The Presence of Largest number of rock cut Excavations, a Large number of inscription enabling a Paleographical study makes Junnar a prominent site for the study of rock cut architecture. Here there are 24 inscriptions, which provide useful paleographical data for the relative dating of the caves. The donors include members of the royal family as well as commoners, which also includes Yavanas (Greeks). One Particular inscription from the Manmodi group mention the name of a minister of Maharathi Nahapana ( C. A.D. 119 - 124).



97. Shah Jahan, Silver Rupee, (2) **Ahmedabad Mint**, AH 1038, 1048, R.Y.Ahad & 12 both KM # 222.2, 235.1, *Very Fine*, (2. Different)

Realised R.....

Estimate: R. 1,500 - 1,800

### **Shah Shuja**



98. **Shah Shuja**, *Silver Rupee*, AH - 1068- **Akbar Nagar Mint**, mint ( Partly Visible ) VF +, Extremely Rare. Shah Shuja was the second son of the Mughal emperor Shah Jahan and empress Mumtaz Mahal, his ruling Period was only for a Short time among that his coins were only issued in AH 1068.

Realised R.....

Estimate: R. 2,20,000 - 2,50,000



## Aurangzeb



99



100

99. Aurangzeb, Gold Mohur, Allahabad Mint, AH 1195, R.Y.37, KM # 315.9, about *Extremely Fine*, *Scarc.*

Realised R.....

Estimate: R. 30,000 - 35,000

100. Aurangzeb, Gold Mohur, AH 1090, R.Y.23, Akbarabad Mint, at top, well centre struck. KM# 315.6, *Very Fine +*, *Scarc.*

Realised R.....

Estimate: R. 30,000 - 35,000



101. Aurangzeb, Gold Mohur, R.Y.11, Surat Mint, KM # 315.45, *Very Fine*.

Realised R.....

Estimate: R. 23,000 - 25,000



102. Aurangzeb, Gold Mohur, AH - 1100, R.Y.32, Shahjahanabad Mint. KM # 315-42, *Very Fine*, *Scarc.*

Realised R.....

Estimate: R. 24,000 - 26,000



103. Aurangzeb, Silver 1/2 Rupee, R.Y. 5, Golkonda Mint, KM # 294.3, *Very Fine*, *Scarc.*

Realised R.....

Estimate: R. 2,500 - 3,000



104. Aurangzeb, Silver Rupee, AH 1071, R.Y.3, Muhiiuddin Type, Zafrabad Mint, at Top KM# 297.10, *Very Fine+*, *Scarc.*

Realised R.....

Estimate: R. 5,000 - 6,000



105. Aurangzeb, Silver Rupee, R.Y.43, Dar - Ul - Zafar, **Karnatak Bijapur Mint**, *Very Fine +, Extremely Rare.*

Realised R.....

Estimate: R. 80,000 - 1,00,000



106



107

106. Aurangzeb Silver, Rupee, AH 1099, R.Y.31, **Sambhar Mint**, KM # 300.79, *Very Fine, Scarce.*

Realised R.....

Estimate: R. 5,000 - 6,000

107. Aurangzeb, Silver Rupee, AH 1116, R.Y. 40, **Nasirabad Mint**, KM # 300.67, *Very Fine, Scarce.*

Realised R.....

Estimate: R. 5,000 - 6,000



108. Aurangzeb, Silver Rupee, AH 1106 R.Y.4, **Kanji Mint**, KM # 300.46, *Very Fine, Scarce.*

Realised R.....

Estimate: R. 5,000 - 6,000



109. Aurangzeb, Silver Rupee, AH 1076, R.Y.14, **Golkunda Mint**, type KM # 300.28, Broad flange, well struck, *Very Fine +.*

Realised R.....

Estimate: R. 2,000 - 3,000



110. Aurangzeb, Silver Rupee, Muhiuddin Type, Ahmednagar Mint, at Top, KM # 297.1, with red patina, *Very Fine, Scarce.*

Realised R.....

Estimate: R. 5,000 - 6,000

## Shah Alam Bahadur



111. **Shah Alam Bahadur**, Silver , 1/2 Rupee, **Surat Mint** , KM # 213.2. *Very Fine.*

Realised R.....

Estimate: R. 800 - 1,000



112. **Shah Alam Bahadur**, Silver Rupee, R.Y4, **Bijapur Mint**, KM # 348.13. *Very Fine.*

Realised R.....

Estimate: R. 8,000 - 10,000



113. **Shah Alam Bahadur**, Silver Rupee, AH. 1120.R.Y.2, **Ahmednagar Mint** , at top KM # 348.2, *Very Fine, Scarc.*

Realised R.....

Estimate: R. 3,000 - 4,000



114. **Shah Alam Bahadur** , Silver Rupee, AH. 1122, **Nusratabad Mint**, KM # 348.30. *Very Fine +, Scarc.*

Realised R.....

Estimate: R. 4,000 - 5,000

## Jahandar Shah



115. **Jahandar Shah**, Silver, 1/2 Rupee, R.Y.Ahad , **Surat Mint**, KM # 362.1 , *Very Fine, Scarc.*

Realised R.....

Estimate: R. 5,000 - 6,000



116. **Jahandar Shah** , Silver Rupee, AH 1124 , R.Y. Ahad , **Ahmednagar Mint**, KM # 363.2 , *Very Fine, Rare.*

Realised R.....

Estimate: R. 4,000 - 5,000



## *Farrukhsiyar*



117. **Farrukhsiyar**, Gold, Mohur, R.Y.2, **Azamnagar Gokak Mint**, *Very Fine +, Very Rare.*

Realised R.....

Estimate: R. 70,000 - 80,000

## *Muhammad Shah*



118. **Muhammad Shah**, Gold, Mohur R.Y.21, Sahib Kiran type, **Shahjahanabad Mint**, KM # 438.22, *Extremely Fine.*

Realised R.....

Estimate: R. 25,000 - 27,000



119. Muhammad Shah, Silver ½ Rupee, R.Y.4, **Azimabad Mint**, (mint off flan) Trishul mint mark KM # 433.11, *Very Fine, Very Rare.*

Realised R.....

Estimate: R. 10,000 - 12,000



120. Muhammad Shah, Silver Rupee, AH 1157, R.Y.27, **Akhtar Nagar Awadh mint**, Fish Mint mark on Rev; Nawab of Awadh Issue, *Very Fine, Scarc.*

Realised R.....

Estimate: R. 5,000 -6,000

121. Muhammad Shah, Silver Rupee, AH 1160 R.Y 30, **Machhalipattan Mint**, KM # 436.42, *Very Fine, Rare.*

Realised R.....

Estimate: R. 2,500 - 3,000



122. Muhammad Shah, Silver Rupee, R.Y.7, **Ba-Luft-Ullah** Badshah - Izaman, **Gulshanabad mint** KM # 435-2 Broad flan, *Very Fine +, Rare.*

Realised R.....

Estimate: R. 5,000 - 6,000



123. Muhammad Shah, Silver Rupee, AH 114X, R.Y.12, **Katak Mint**, KM # 436.37, *Very Fine, Rare.*

Realised R.....

Estimate: R. 5,000 - 6,000

### **Ahmed Shah Bahadur**



124



125

124. **Ahmed Shah Bahadur**, Silver Rupee, AH 1165, R.Y.5. **Machhalipatan Mint**, KM # 446.31, *Very Fine, Scarce.*

Realised R.....

Estimate R. 4,000 - 5,000

125. Ahmed Shah Bahadur, Silver Rupee, AH 1161 R.Y. Ahad, **Narwar full mint** on coin Broad flan, *Very Fine +, Scarce.*

Realised R.....

Estimate R. 3,000 - 4,000



126



127

126. Ahmed Shah Bahadur, Silver Rupee, AH 116X, R.Y.2, **Arcot Mint**, Nawab of Arcot issue, *Very Fine +.*

Realised R.....

Estimate R. 3,000 - 4,000

127. Ahmed Shah Bahadur, Silver Rupee, R.Y.6, Dar-ul-fath, **Ujjain Mint**, *Very Fine, Scarce.*

Realised R.....

Estimate R. 3,000 - 4,000

### **Shah Jahan III**



128. Shah Jahan III, Silver Rupee, AH (11) 74. R.Y. Ahad, Azimabad mint, Trishul, as mint mark, *Very Fine, Rare.*

Realised R.....

Estimate R. 3,000 - 4,000

## Shah Alam II



129. SHAH ALAM II, Silver, 1/8 Rupee, **Dar ul sarur Burhanpur Mint**, R.Y.13, *Very Fine +, Scarce.*

Realised R.....

Estimate R. 7,000 - 10,000



130



131

130. Shah Alam II, Silver Rupee, AH 1201, R.Y.28, **Ahmedabad mint**, ( not in Gujarat, but in North India ) beaded flower & Sword Mint Mark, full mint at top KM # 482, *Very Fine, Rare.*

Realised R.....

Estimate R. 22,000 - 25,000

131. Shah Alam II, Silver, Nazarana, AH – 1217, R.Y.45. Umbrella and Tree, mint mark, KM # 711, small trace of mount. *Very Fine, Rare.*

Realised R.....

Estimate R. 25,000 - 30,000



132



133

132. Shah Alam II, Silver Rupee, AH xx88, R.Y.45, **Daultabad Mint**, *Very Fine +, Very Rare.*

Realised R.....

Estimate R. 15,000 - 18,000

133. Shah Alam II, Silver Rupee, R.Y. 7, **Mandisor Mint**, Full Mint on Coin, Star or Flower Mint Mark on obv; *Very Fine, Scarce.*

Realised R.....

Estimate R. 3,000 - 4,000



134. Shah Alam II, Copper, (2) Different Paisa, **Akbarabad Mint**, Governor's Hammered Coinage. Mughal Issue Issuer Daulat Rao Sindhia with John & George Hessing in Charge. obv; Inscription, Rev Katar or Dagger Mint Mark, KM # 549.3, *Very Fine, Scarce.* (2)

Realised R.....

Estimate R. 4,000 - 5,000



***Bedar Bakht***



135. Bedar Bakht, Silver Rupee, AH 1202, R.Y.29, **Ahmedabad Mint**, ( Not the Ahmedabad Mint in Gujarat but it is in North India.) KM # 738, Bedar Bakht at the beginning of his rebellion before placing his own name on Coinage , at Saharanpur which took the name Ahmedabad during the reign of bedar-bakht *Very Fine, Very Rare.*

Realised R.....

Estimate R. 22,000 - 25,000

**Muhammad Akbar II**



136. **Muhammad Akbar II**, Silver, Nazarana Rupee, AH.1224, R.Y.3, Shahjahanabad Mint, KM # 779.1, about *Very Fine, Rare.*

Realised R.....

Estimate R. 15,000 - 18,000

**Independent Kingdom**

***Arakan***



137. **Arakan**, Silver, Rupee, Thado, BE 1007 (1645) KM # 12 , *Very Fine , Scare.*

Realised R.....

Estimate R. 3,000 - 3,500

***Jammu***



138. **Jammu**, Shah Alam II , Silver Rupee, AH 1198, R.Y. 25, w/o Mint Mark KM # 5.1, *Very Fine, Scare.*

Realised R.....

Estimate R. 3,000 - 3,500

139. Jammu, Silver Rupee, in the Name of **Shah Alam II**, Ranjit Dev, Fine Fabric R.Y. X8, KM # 10-1, *Very Fine , Scare.*

Realised R.....

Estimate R. 3,000 - 3,500

## Maratha



140. Maratha, Copper Paisa (2) In the name of **Shah Alam II**, AH. 1221, R.Y.41, **Saharanpur Mint**, *Very Fine, Scarce*.

Realised R.....

Estimate R. 4,000 - 5,000



141



142

141. Maratha, Silver Rupee, **Shah Alam II**, Fazl Hamidin type-**Vafgaon Mint**, *Very Fine, Scarce*.

Realised R.....

Estimate R. 1,200 - 1,500

142. Maratha, Silver Rupee, **Shah Alam II**, AH X128, R.Y. 43, **Saharanpur Mint**, at top, *Very Fine*.

Realised R.....

Estimate R. 2,000 -2,500



143. Maratha, silver Rupee, (2) 1, **Shah Alam II**, Date 1232, **Pune Mint**, 2, Shahjahanabad Mint, Chattar or Umbrella as a Mint Mark, *Very Fine*.(2)

Realised R.....

Estimate R. 5,000 - 6,000

## Mysore



144. Mysore, Gold Fanam (2) 1217,1218, Both Retrograde date, **Farukkhi Mint**, *Very Fine* (2 Pcs).

Realised R.....

Estimate R. 2,200 - 2,400



145. Mysore, **Gold Fanam** (2) AH 1200,1215, ( Retrograde) **Kalikut Mint**, *Very Fine*, (2)

Realised R.....

Estimate R. 2,200 - 2,400



146. **Mysore, Gold, Fanam, Tipu Sultan. AH 1198, Nagar Mint. Very Fine.**

Realised R.....

Estimate R. 1,000 - 1,200



147. **Mysore, Gold Fanam (10), All Different Dates, Ah1197, 1198, 1199,1200,1215,1216,(1217 Retrograde),1218,(1219 Retrograde) (1222 Retrograde) All Patan Mint,Very Fine, Scare. (10)**

Realised R.....

Estimate R. 12,000 - 14,000

### ***Rohilkhand***



148. **Rohilkhand, Mohur Najibabad Mint, in the name of Shah Alam II, R.Y.6, Very Fine Scare.**

Realised R.....

Estimate R. 26,000 - 28,000



149. **Rohilkhand, Silver (6), Rupee, In the name of Shah Alam II, Najibabad Mint, R.Y. 22, 24, 25, 26, 27, 28, Sward Mint Mark in R.Y.25, Very Fine +, Scare. (6)**

Realised R.....

Estimate R. 6,000 - 8,000



150. **Rohilkhand, Silver Rupee, of Inayat khan, In the name of Shah Alam II, AH 1176, R.Y.4, Itawa Mint, Sword Mint Mark. Broad flan, Very nice coin & full mint on coin. KM # 66, Very Fine +, Rare.**

Realised R.....

Estimate R. 8,000 - 10,000

**Sikh Empire**



151. Sikh ?

Copper Takka 17.7.gms.In the name of Shah Alam II,1209/36,mint'Dehra Raja' 'Dehra Raja'may be identified with Dehra which is presently known as Dehra Dun. It must be noted that 'Dun' here is the name of a river and in the name it serves as a 'descriptor' for 'Dehra'. In the mint-name 'Raja' could well serve a similar purpose –'Dehra Raja' could mean 'King's Dehra'.It is possible that a mint operated at Dehra might have been sustained on copper from neighbouring Nepal and Tibet.Who struck this interesting copper coin is a good question.It bears two distinct mint marks a triangular banner on obverse and a stylized 'dagger' on the reverse. Both these marks have an Awadh / Rohilla pedigree, however by c. 1796, the Rohillas had long been defeated.The area around Dehra Dun was raided by Gujjars,Rajputs,Sikhs and Gurkhas prior to its eventual Nepalese conquest which lasted for almost a decade. We know that the Sikh rulers at Kalsia (Chhachhaurli) struck coins based on Awadh/Rohilla prototypes and this coin bears similar characteristics. It is therefore very likely that it is a Sikh issue, although more research is needed to support this attribution. Extremely Fine for the type, *Extremely Rare*.

Realised R.....

Estimate R. 30,000 - 40,000



152. Silver Rupee, Lakhi, (Brokage) **Amritsar Mint ?**, VS 1904 ,*Very Fine +* , *Extremely Rare*.

Realised R.....

Estimate R. 40,000 - 50,000



153.Silver Rupee, **Amritsar Mint** , 1872 , KM# 20.1, *Very Fine*.

Realised R.....

Estimate R. 1,200 - 1,500

**Princely State**

**Awadh**



154.**Awadh**, Silver 1 /8 Rupee, Wajid Ali Shah, AH 1271, Variety VI , KM # 115.2. *Very Fine +*,

Realised R.....

Estimate R. 4,000 - 5,000





155. Awadh, Silver Rupee, (3) **Shah Alam II**, Umbrella and Stylized fish Mint Mark R.Y.20.21.22, **Itawa Mint**, KM # 76.4, *Very Fine +*.(3)

Realised R. ....

Estimate R. 6,000 - 8,000



156. Awadh, Silver Rupee (2), **Shah Alam II**, R.Y. 29, 37, **Quitta Bareli Mint**, Star-shaped flower, dagger, Fish and Persian letter, Mim on both coin, *Very Fine, Scarc.*(2)

Realised R. ....

Estimate R. 2,000 - 2,500



157. Awadh, Silver Rupees (3) AH 1241, 1249, 1260, Ghazi ud din Haider, & Amjad Ali Shah In the name of Shah Alam II, *Very Fine, Scarc.*(3)

Realised R. ....

Estimate R. 4,000 - 5,000



158. Awadh, Silver Rupee, Wajid Ali Shah . AH, 1269, R.Y. 6, KM # 118.3, *Extremely Fine, Scarc.*

Realised R. ....

Estimate R. 2,000 - 2,500



159. Awadh, Silver Rupee (3) **Shah Alam II**, R.Y.15, 25, 26, **Muhammadabad Banaras Mint**, *Extremely Fine, Scarc.* in this condition.

Realised R. ....

Estimate R. 4,000 - 5,000

**Alwar**

160. **Alwar**, Silver Rupee, (2) Mangal Singh date 1882, 1891, Y # 5, 5a, *Very Fine.* (2)

Realised R. ....

Estimate R. 3,000 - 3,500

**Baroda**



161

161. **Baroda**, Silver, 1/8 Rupee, 1.4.gm, Sayaji Rao II ?, Sword as mint mark, *Very Fine, Rare.*

Realised R.....

Estimate R. 4,000 -5,000



162

162. **Baroda**, Silver, 1/4 Rupee, Khande Rao, Y # 3, *Very Fine, Scarce.*

Realised R.....

Estimate R. 1,000 -1,200



163

163. **Baroda**, Silver 1/2 , Rupee, R.Y.2, Anand Rao, Nagari Shri or Aa, *Very Fine +, Unpublished, Extremely Rare.*

Realised R.....

Estimate R. 5,000 - 6,000



164

164. **Baroda**, Silver Rupee, Anand Rao, Nagri Aa, **Petlad Mint**, C # 13, *Very Fine, Scarce.*

Realised R.....

Estimate R. 1,000 - 1,200



165. **Baroda**, Silver, (5) Different Rupee, in the name of Shah Alam II, Different Mint Mark and Initial *Very Fine.*(5)

Realised R.....

Estimate R. 3,000 - 3,500



166. **Baroda**, Silver 1/8 Rupee, 1/4 Rupee, VS 1949, portrait of Sayaji Rao III, Y # 33, 34, *Very Fine, Scarce.*

Realised R.....

Estimate R. 4,000 - 5,000



167.Baroda , Silver Rupee, VS. 1953, Portrait of Sayaji Rao III , Y # 36a, about *Extremely Fine, Scarce*.

Realised R.....

Estimate: R. 3,500 - 4,000



168.Baroda, Sayaji III , Silver Rupee, VS. 1952, Portrait of Sayaji Rao III ,KM # 36a , *Very Fine*.

Realised R.....

Estimate: R. 3,000 - 3,500

## ***Bharatpur***



169.**Bharatpur**, Gold Mohur, in the name of Alamgir II, R.Y. 6 , **Maha Indrapur Mint**, KM # 28 , *Very Fine, Rare*.

Realised R.....

Estimate: R. 35,000 - 40,000



170.Bharatpur, Silver, **Nazarana** Rupee,in the name of Shah Jahan III and Jaswant Singh, AH-1173, R.Y.Ahad,**Mint Maha Indrapur**, This is a unpublsh nazarana rupee,how ever the normal rupee is publsh as KM # 29. About *Extremely Fine, Extremely Rare*.

Realised R.....

Estimate: R. 15,000 - 20,000



171.Jaswant Singh,Silver Rupee,with the Name & Portrait of Queen Victoria,VS. -1910, Katar Simbol before date. **Bharatpur Mint**. *Very Fine, Scarce*.

Realised R.....

Estimate: R. 5,000 - 6,000





172. Bharatpur, Silver, Rupee, in the name of Jaswant Singh and Queen Victoria with her Portrait on obv. mint Braj Indrapur, Star and Dagger Mint Mark KM # 166, Broad flan, *Very Fine, Rare.*

Realised R.....

Estimate: R. 12,000 - 15,000



173



174



173. Bharatpur, Silver Rupee, AH 1236, R.y-16. Wide Flan in the Name of Muhammad Akbar II, **Braj Indrapur mint** at Top, *Very Fine, Scare.*

Realised R.....

Estimate: R. 3,000 - 4,000

174. Silver Rupee, AH. 1186, R.Y.14, in the name of Shah Alam II, Braj Indrapur Full Mint on coin, *Very Fine, Scare.*

Realised R.....

Estimate: R. 1,000 - 1,200

## ***Bhopal***



175. **Bhopal**, Silver Rupee, Shah Alam II, Date 117X, R.Y.13, Bhopal Mint, on coin, Sword Mint Mark, C # 12, *Very Fine.*

Realised R.....

Estimate: R. 1,000 - 1,200

## ***Bikanir***



176. **Bikanir**, Silver Rupee, AH 116X R.Y. Ahad, Gaj Singh in the name of Alamgir II, Baldat **Bikanir Mint**, at Top C # 9, *Very Fine, Scare.*

Realised R.....

Estimate: R. 3,000 - 4,000



177. **Gangasingh**, Silver Rupee, VS. 1994, AD 1937, Issued to Commemorate the Golden Jubilee of reign, About. *Extremely Fine, Scare Y # 19.*

Realised R.....

Estimate: R. 3,500 - 4,000





178. Bikanir, Silver Rupee, (2) Portrait of Victoria Empress, AH 1892, 1897 (Scare date). KM # 18. *Very Fine*. (2)

Realised R.....

Estimate: R. 3,500 - 4,000



179. Bindraban, Copper, Paise (4), Mughal Issue, In the Name of Shah Alam II, Mint mark, Fish, Trident Etc., *Very Fine, Scare*. (4)

Realised R.....

Estimate: R. 4,000 - 4,500

**Cooch Behar**



180. Cooch Behar, Silver Rupee, Vira Narayan SE 1548 CB-117, KM # 66, *Very Fine, Scare*.

Realised R.....

Estimate: R. 4,000 - 5,000

**Datia**



181. Datia, Nazarana, 1/2 Mohur, Portrait of Govind Singh on obv; cotofarm on rev, AH 1325-1368, AD 1907-1948 N.D, Y # 1, *Very Fine + For the Type. Rare*.

Realised R.....

Estimate: R. 1,00,000 - 1,20,000



182. Datia, silver Rupee, Shah Alam- II Mughal Issue, AH 1178, R.Y. 6, Dalipnagar Mint KM # 6, *Very Fine, Scare*.

Realised R.....

Estimate: R. 3,000 - 3,500

## Dhar



183. **Dhar**, Copper (3) , 1/4 Anna,1/2 Pice, 1/12 Anna, 1887,Set of - 3 Coins. *Very Fine, Scarc.* (3)

Realised R.....

Estimate: R. 3,000 - 4,000

## Dungarpur



184. **Dungarpur, Paisa Copper**,Lakshman singh VS.2001. AD 1944, Rev. 2, bars above P of Paisa Y # 1, *Very Fine, Scarc.*

Realised R.....

Estimate: R. 2,500 - 3,000

## Gwalior



185. **Gwalior ?**

Silver rupee in the name of Shah Alam II, RY15, Shahjahanpur mint Shahjahanpur is the headquarters of the district of the same name towards located in South-Eastern Rohilkhand. In about 1775, when this coin was struck, it was under the control of Dundey Khan Shahjahanpuri, an ambitious Rohilla sardar. After the battle of Miranpur Katra, the territory was annexed by Shuja'a ud-Daula, the Nawab of Awadh. The coin could have been issued by any one of these two contenders. Judging by the fact that it bears a Trisul as a mint-mark, it is more likely to have been an issue of Awadh. There is also a possibility of 'Shahjahanpur' being identified with Shajapur, in Madhya Pradesh. This town was under the control of Gwalior and it is likely that a mint was operated here in 1775 under the aegis of Gwalior. The mint-mark and the general style of the coin would support this attribution.

*Very Fine , Extremely Rare.*

Realised R.....

Estimate: R. 30,000 - 40,000



186. **Gwalior, Copper**, 1/2 Paisa, 2.2.gm, **Dahod Mint**, in the Name of Jayaji Rao; AH 1259, 1304 Similar to KM # 49.1 about *Very Fine, Scarc.*

Realised R.....

Estimate: R. 4,000 - 5,000

## Hyderabad



187. Hyderabad, Silver Rupee, Hyderabad Mint, In the name of Shah Alam II, Provisional Issue, AH1175, *Very Fine, Scarc.*

Realised R.....

Estimate: R. 3,000 - 4,000



188. Hyderabad, Sikandar Jah, Silver Nazarana Rupee, in name of Muhammad Akbar II, AH 1237 R.Y.16 (KM. C48a ) Golden Peripheral tone, Nearly, *Extremely Fine, Very Rare*

Realised R.....

Estimate: R. 40,000 - 50,000



189. Hyderabad, Silver Coin (4), Rupee, 1/2 Rupee, 1/4 Rupee, 1/8 Rupee. Mir Mahabub Ali Khan II, *Very Fine, Scarc* as a set, (4)

Realised R.....

Estimate: R. 3,600 - 4,000

## Indore



190. Indore, Silver, 1/2 Rupee, 1208 Maheshwar Mint, Bilva Leaf and Lingam BHS # 70. *Very Fine, Scarc.*

Realised R.....

Estimate: R. 4,000 - 5,000



191.Indore, Silver, 1/2 Rupee, AH 1198, obv; lingam & Farsha as a Mint Mark on rev,*Very Fine, Scare.*

Realised R.....

Estimate: R. 5,000 - 6,000



192.Indore, Silver (4) Rupees, 1/2 Rupee, 1/4 Rupee, 1/8 Rupee. Sun Type, Set of 4 Coins , *Very Fine.* (4)

Realised R.....

Estimate: R. 2,500 - 3,000



193.Indore,Jaswant Singh,SE1728,Sanskrit legend on obv;sri laxmikanta padambhokja Bharramararit Chetasa yeshhwantasa Vikhyata Mudrasa Pritiviale,Rev legent Sri Indraprastha Sthito Raja Chakravaravarti Bhumandale, Tatprasadata Krita mudra Lokesminvaivirajite, C # 52, *Very Fine, Rare.*

Realised R.....

Estimate: R. 25,000 - 30,000

***Jaisalmir,***



194.**Jaisalmir**, Silver (4), Rupee, 1/2 Rupee, 1/4 Rupee, 1/8 Rupee, Bird & Frozen Regnal Year 22. Gujarati Numeral 17 in all coins. *Very Nice, Very Fine & Scare.* (4)

Realised R.....

Estimate: R. 4,000 - 5000



## ***Jhalawar***



195. **Jhalawar**, Silver **Nazarana Rupee**, R.Y. 20, In the Name of Queen Victoria. Y # 6a *Very Fine +, Very Rare.*

Realised R.....

Estimate: R. 30,000 - 35,000

## ***Jodhpur***



196. **Jodhpur**, Gold 1/4 Mohur, 2.8. gm, Nagri go, In the name of George VI and **Hanwant singh** as Titular Ruler. KM # 158, *Very Fine, Rare.*

Realised R.....

Estimate: R. 18,000 - 20,000



197. **Jodhpur** Silver Rupee, In the name of Ahmed Shah Bhadur, Baldat Garh Jodhpur Mint, AH 1164. R.Y. 4, *Very Fine+, Very Rare.*

Realised R.....

Estimate: R. 25,000- 30,000

## ***Kaithal***



198. **Kaithal**, (cis-Sutlej State) Gold Mohur, Desu or Lal Singh, in the name of Ahmad Shah Durrani, (similar to Km11). *Very fine +, and extremely rare.*

The Gold coins of Kaithal are far more rare than the similar coins of Patiala and Maler Kotla.

Realised R.....

Estimate: R. 80,000 - 1,00,000

## Kutch



199. **Kutch**, Deshalji I, 1/4 Kori, ( Rohit # 90.1 ) *Extremely Fine, Rare.*

Realised R.....

Estimate: R. 14,000 - 16,000



200. **Kutch**, Bharmalji I, Silver, Jahangir Kori, with the name of Mughal Emperor Jahangir, AH 1028, on obv; (Rohit # 28.1) *Very Fine +. Rare.*

Realised R.....

Estimate: R. 15,000 - 18,000



201. **Kutch**, Gold 25 Kori(2), Desalji II, vs.1915 (AD.1858) In the name of Bahadur Shah II,C# 67,Pragmalji II, in the name of Queen Victoria VS 1920, (AD 1864) Y # 17, *Very Fine, Scarce.*

Realised R.....

Estimate: R. 50,000 - 60,000



202. **Kutch**, Madansinghji Silver, JAI HIND 5 Kori,VS 2004 an Issue of Independent India in 1948.the last issue of the last ruler of a state that was merged in the Indian union in 1948,rev the famous Bhujia fort of Bhuj*Extremely fine,Extremely Rare.*

Realised R.....

Estimate: R. 40,000 - 50,000

## Lunawada



203. **Lunawada**, Copper (4) pcs, 2 pcs, 1 paisa, 2 pcs 1/2 paise, In the name of Wakhat Singhji *Very Fine.* (4)

Realised R.....

Estimate: R. 2,000 - 2,500



204. **Nabha**, (cis-Sutlej State), Gold Mohur, Hira Singh, Ad1870-1911, obv; Branch and Katar to left, rev, AD 1910, KM # 3, *Very Fine, Rare.*

Realised R.....

Estimate: R. 45,000 - 50,000



205. **Patiala** (cis-Sutlej State), Karm Singh, (1229-1261, AD 1813-1845), Gold mohur, in the name of Ahmad Shah Durrani, sword mintmark (like rupee C 31) (KM 35). about *Extremely fine* and *very scarce*.

Realised R.....

Estimate: R. 40,000 - 50,000

### ***Sailana***



206. **Sailana**, Copper 1/4 Anna 1912, Jaswant Singh Y # 6, *Extremely Fine, Scarce.*

Realised R.....

Estimate: R. 8,000 - 10,000

### ***Tripura***



207. **Tripura**, Silver Rupee, **Vir Vikrama Krishore Manikya** , Lion type TE. 1341. (1934) KM # 409, *Very Fine +, Scarce.*

Realised R.....

Estimate: R. 6,000 - 8,000

### ***Travancore***

208. Travancore Silver (2) Rama Varma 1/2 Rupee, date 1889, KM # 38, NGC holder graded Ms 62, 1/4 Rupee, date 1889, KM # 37, with NGC holder, graded Au-55.(2)

Realised R.....

Estimate: R. 20,000 - 22,000

## Mewar



209. **Mewar**, Silver (5) Set of 5 Coin, Swarupshahi Series Rupee, 1/2 Rupee, 1/4 Rupee, 1/8 Rupee, 1/16 Rupee, *Very Fine, Scare.* (5)

Realised R.....

Estimate: R. 2,000 - 2,500

210. **Mewar**, Silver (5) Rupee, 1/2 Rupee, 1/4 Rupee, 1/8 Rupee, 1/16 Rupee, Dosti London. Milled Coinage, This Coins dated . VS-1985, 1928 AD , But actually struck between 1931-1932 A.D. Scare as a set of 5 Coins , *Very Fine.* (5)

Realised R.....

Estimate: R. 1,600 - 1,800

## Indo Danish



211. **Indo Danish**, Silver 2 Royaliner , Ruler Christain VII, Date 17xx , *Very Fine, Scare.*

Realised R.....

Estimate: R. 6,000 - 8,000

## Indo Dutch



212. **Indo Dutch**, 4 Cash, N.D. *Very Fine, Scare.*

Realised R.....

Estimate: R. 2,000 - 2,500

## Indo French



213. **Indo French**, Silver, (2) 4 Royalins, 2 Royalins, Royal Hindu Crown C # 132 & 133 *Very Fine, Scare.* (2)

Realised R.....

Estimate: R. 6,000 - 8,000



# Portugese- India

214. **Portugese- India**, Lead Coin 5, 20, **Bazarucos**, 1800, 1877, Crude Crowned arms, Date in angles of Cross KM # 15, 35, *Very Fine*. (2)

Realised R.....



Estimate: R. 2,500 - 3,000

215. **Portugese- India**, Silver , 5.4.gm, **Pardao (300 Reis)** , Pedro V , A.D. 1857, KM # 200, about *Very Fine*, *Scarc*.

Realised R.....

Estimate: R. 10,000 - 12,000



216



Large Image



Large Image

217



216. **Portugese- India**, **Pardao, Maria II** , 1861 on coin KM # 276, NGC. Holder, graded as *Very Fine -25*, (1851 Written on NGC Holder) *Rare*.

Realised R.....

Estimate: R. 20,000 - 25,000

217. **Portugese- India**, **Pardao 1782**, KM # 190, NGC Holder Graded *AU 58* *Very Rare*.

Realised R.....

Estimate: R. 25,000 - 30,000



218. **Portuguese- India**, 600 Reis Silver - Pattern, 1834 KM # - PN - 15, NGC Holder Graded *XF-40*, *Extremely Rare* .

Realised R.....

Estimate: R. 1,25,000 - 1,50,000



Large Image

219. **Portugese- India**, 2 Tanga, Date 1640, KM # 66 , NGC Holder Graded *AU-50*, *Extremely Rare*.

Realised R.....

Estimate: R. 80,000 - 1,00,000

# East India Company: Bengal Presidency



220. **Bengal Presidency**, 1/2 Pice Sikka KM # 710, Extremely Fine Scare. all half Pice Sikka are Rare than one Pice. Rare, *Extremely Fine*.

Realised R.....

Estimate: R. 10,000 - 12,000



221. **Bengal Presidency**, Shah Alam II, Copper Anna 28.7 g. Calcutta Mint,(full mint on coin) C # 724, Pridmore 188 about *Extremely Fine* for the type *Very Rare*.

Realised R.....

Estimate: R. 1,00,000 - 1,25,000

222. **Bengal Presidency**, Copper, 1 Pie Pattern, 1809, Coat of arms of the East India Company on obv, with motto in Ribbon, the value 'EK Pai Sikka' in three languages on the Rev, (prid # 389) *Extremely Fine, Rare*.

Realised R.....

Estimate: R. 35,000 - 40,000



223. **Bengal Presidency**, Silver 1/4 Rupee, AH 1204 R.Y. 45 Farrukhabad Mint Vertical Milling C # 852a, *Extremely Fine, Very Scare*.

Realised R.....

Estimate: R. 6,000 - 7,000



224. **Bengal Presidency**, Silver, Rupee, In the name of Ahmed Shah, Bahadur, AH 1167.R.Y.6, Murshidabad Mint Sun Symbol on obv; as Nawas of Bengal Issue. *Very Fine +, Scare*.

Realised R.....

Estimate: R. 6,000 - 7,000



225. **Bengal Presidency**, Silver Rupee, In the name of Alamgir II, R.Y. Ahad, Mint Murshidabad Sun Symbol as Nawas of Bengal Issue. *Very Fine +, Scare*.

Realised R.....

Estimate: R. 3,000 - 4,000



226



227

226. Bengal Presidency, Silver Rupee, In the name of Shah Alam II, Murshidabad Mint, Crescent Mint Mark on obv; *Very Fine, Scarce.*

Realised R.....

Estimate: R. 2,000 - 3,000

227. Bengal Presidency, Silver Rupee, in the Name Of Shah Alam II, Ah 1205 R.Y.19, Mursidabad Mint Partly Machine Struck, C# 754.2 *Very Fine +, Scarce.*

Realised R.....

Estimate: R. 2,000 - 2,500

### ***Bombay Presidency***



228. **Bombay Presidency**, Tin, Double Pice, 29.4gm, AD 1741 Bomb below Crown on obv, 4: line, Latin legend on Rev, *Fine +, Rare.*

Realised R.....

Estimate: R. 40,000 - 45,000



229. Bombay Presidency, Indian design, Bombay Mint gold panchia posthumous issue A.H. 1188 (1788) in the name of Alamgir II ( 1754-1759), ry 9 ( 3.85 grams), . *Very fine and Very rare.*

**Ex R.A. Climpson Collection.**

Realised R.....

Estimate: R. 1,50,000 - 1,80,000



230. Bombay Presidency, Indian design, Surat Mint gold double Panchiya (Ten Rupees) 7.86 g. in the Name of Shah Alam II, (1759-1806), regnal year 51, PM 1 (three lozenges, one over two) with out AH Date (cf .pr.250-1, KM, Sac 667). about *Extremely Fine and Extremely Rare.*

**Ex R.A. Climpson collection.**

Realised R.....

Estimate: R. 2,50,000 - 3,00,000



231. Bombay Presidency (3) 1825 silver Rupee, 1/2 Rupee, And 1/4 Rupee, in the name of Shah Alam II, 1825 incused in a tablet on Rev; Crown Privy Mark on obv and Forzen R.Y.47, On Rev; Very Fine, Scare, as a set 3 Coins, *Very Fine, Scare*.

Realised R.....

Estimate R. 25,000 - 28,000



232. Bombay Presidency (3), Shah Alam II, Surat Mint, Rupee, 1/2 Rupee, 1/4 Rupee, AH 1215, R.Y.46, Machine struck, Plain edge, *Very Fine, Scare*.

Realised R.....

Estimate R. 4,500 - 5,000

### ***Madras Presidency***



233. Madras Presidency, Gold 2 Pagodas 6.0.gm, Vishnu on obv and Gopuram. On Rev, 18, Star on obv. N.D. (1808-15) small letters, *Extremely Fine, Rare*.

Realised R.....

Estimate R. 50,000 - 60,000



234. Madras Presidency, Copper, (2) 20 cash, 10 cash, Date 1808, C# 433, C#434, *Very Fine*,

Realised R.....

Estimate R. 2,000 - 2,500

### ***East India Company Univarsal Coinage***



235. **William IV**, Silver Rupee, 1835 Counter Mark PM, Initial for port Mozambique, Very Fine +, for the Type, *Very Rare*.

Realised R.....

Estimate R. 10,000 - 12,000





236. Victoria Queen, Silver (4) 1840, Rupee, 1/2 Rupee, 1/4 Rupee, 1/8 Rupee, Continuous Legend Calcutta Mint, about Uncirculated, *Scarc.*(4)

Realised R.....

Estimate: R. 7,000 - 8,000



237. Victoria Queen, Silver (4) 1840, Divided Legend, Mumbai Mint, Uncirculated, *Scarc.*(4)

Realised R.....

Estimate: R. 7,000 - 8,000



238. Victoria Queen, Silver, 1/2 Rupee, 1862. Extremely Fine, *Scarc.*

Realised R.....

Estimate: R. 5,000 - 6,000



239. Victoria Queen, Silver Rupee, complete Lakhi (Brokage) Impression on Rev. *Very Fine, Scarc.*

Realised R.....

Estimate: R. 10,000 - 12,000

240. Victoria Queen Silver Rupee, complete Lakhi (Brokage) Impression on Rev. *Very Fine +,*

Realised R.....

Estimate: R. 14,000 - 16,000

## British India



241. **Victoria Empress**, Silver, Rupee, 1884, counter marked PM for Port Mozambique with crown on top. *Very Fine, Very Rare.*

Realised R.....

Estimate: R. 5,000 - 6,000



242. Victoria Empress, (2) Copper 1/4 Anna, 1880 and 1889, *Extremely Fine*. with black patina.

Realised R.....

Estimate: R. 2,500 - 3,000



243. Victoria Empress, Silver 1/2 Rupee, 1899, Uncirculated.

Realised R.....

Estimate: R. 3,000 - 4,000



244. Victoria Empress, Silver 1/2 Rupee, 1899, NNC Graded MS-64.

Realised R.....

Estimate: R. 4,000 - 5,000



245. Victoria Empress, Silver, (4) Rupee, 1/2 Rupee, 1/4 Rupee, 1/8 Rupee, Date. 1888 Set of 4. *Very Fine, Scarce*.

Realised R.....

Estimate: R. 5,000 - 6,000



246. Victoria Empress, Silver, (4) Rupee, 1/2 Rupee, 1/4 Rupee, 1/8 Rupee, Date. 1889 Set of 4. *Very Fine +, Scarce*.

Realised R.....

Estimate: R. 6,000 - 8,000

247. Victoria Empress, Silver, (4) Rupee, 1/2 Rupee, 1/4 Rupee, 1/8 Rupee, Date. 1892 Set of 4. *Very Fine.*

Realised R.....

Estimate: R. 5,000 - 7,000



248. Victoria Empress, Silver, (4) Rupee, 1/2 Rupee, 1/4 Rupee, 1/8 Rupee, Date. 1893 Set of 4. *Very Fine, Scarce.*

Realised R.....

Estimate: R. 5,000 - 6,000



249. Victoria Empress, Silver, Rupee 1897, obv. A, Rev I, B incused. about *Extremely Fine, Rare.*

Realised R.....

Estimate: R. 18,000 -20,000



250

251

250. Edward VII, Silver Rupee, Complete Lakhi Impression on Rev. *Very Fine +.*

Realised R.....

Estimate: R. 8,000 -10,000

251. George 5<sup>th</sup> Silver Rupee, Complete Lakhi Impression on Rev. *Very Fine.*

Realised R.....

Estimate: R. 5,000 - 6,000



252. George 5<sup>th</sup>, Silver, Rupee, (3), 1911, (pig) 1921, 1922, Mumbai Mint, *Extremely Fine, Scarce date.*

Realised R.....

Estimate: R. 6,000 - 8,000





253. George 6, Silver Rupee, 1938, Calcutta Mint, *Extremely Fine*.

Realised R.....

Estimate: R. 5,000 - 6,000



254. George VI, Silver Rupee, 1945 Bombay Mint, Large 5, Security Edge, KM# 557.1. about *Extremely Fine* .

Realised R.....

Estimate: R. 22,000 - 25,000

***Republic of India.***

255. Food For All, Silver, 10 Rupee, 1970, Bombay mint , *Extremely Fine*.

Realised R.....

Estimate: R. 2,200 - 2,500



256. Food For All, Silver, 10 Rupee & 20 Paisa Bronze, 1971 Bombay Mint. Uncirculated, *Scare*.

Realised R.....

Estimate: R. 3,000 - 3,500

***Foreign Coins***

257. IRAN, Sassanians, Silver Drachm, (4) Peroz ?, (AD 457 - 483 ? ) *Very Fine +, Scare*. (4. Pcs)

Realised R.....

Estimate: R. 5,000 - 6,000

258. Bolivia, Silver, 8 Reales 26.9.gm, 1804 P. J. Mint, Charles III, KM# 73, about *Extremely Fine +*,

Realised R.....

Estimate: R. 2,500 - 3,000





259. **Great Britain**, Gold Guinea, 8.2.gm. George III, Fourth Issue, 1794, *Fine +*.

Realised R.....

Estimate: R. 26,000 - 28,000



260. **Great Britain**, Silver Shilling, 6.gm. 1758 Georgivs II, W/O Limba below bust, *Very Fine +*.

Realised R.....

Estimate: R. 4,000 -5,000



261. **Great Britain**, Crown 28.3.gm. 1935, George V Silver Jubilee, KM# 842, *Very Fine +*.

Realised R.....

Estimate: R. 1,500 - 2,000



262. **Guatemala**, Silver, 8 Reales, 27.2.gm. 1818 N G-M Mint Mark, Ferdin VII, KM# 69, *Very Fine, Scarce*.

Realised R.....

Estimate: R. 2,000 - 2,500



263. **Hong Kong**, Silver Dollar, 26.8.gm. 1867.obv; Crowned head left, within circle, Rev Chinese value, Characters within ornament Design, within English text, struck in Honkong mint, KM # 10, *Very Fine, Scarce*.

Realised R.....

Estimate: R. 8,000 - 10,000



264. **German East Africa**, Silver Double Rupee, Guilelmus II, 1893, *Very Fine, Scarce*.

Realised R.....

Estimate: R. 20,000 - 22,000

265. **Mexico**, Silver, 8 Reales, 26.6.gm. Charles III, 1805, Armored bust KM # 109, *Very Fine*.

Realised R.....

Estimate: R. 2,000 - 2,500

266. **Peru**, Silver, 8 Reals, 27.2.gm, 1836 T M Mint Mark, Limba Mint, Estado nor-Peruano, KM# 155, *Very Fine+*, *Very Scarce*.

Realised R.....

Estimate: R. 4,000 - 5,000

267. **Portugal**, Carlos I, Silver (3) 1000, 500, 200 Reis, 1898, Uncirculated With luster, (3)

Realised R.....

Estimate: R. 6,000 - 8,000



268. **U.S.A**, Gold 5 Dollar, 8.4.gm, Capped hade, 1881 With Motto ( In God we trust) *Very Fine*.

Realised R.....

Estimate: R. 20,000 - 22,000

## Medals



269. **Victoria**, Silver, India General Service Medal one bar of Burma dated 1885-7 Awarded to Bhikajee Baider *Very Fine*.

Realised R.....

Estimate: R. 7,000 - 8,000

270. Victoria, Silver, India General Service Medal one bar Punjab Frontier dated 1897-98, *Very Fine*.
- Realised R..... Estimate: R. 7,000 - 8,000
271. George V, Silver Indian Title Badge Rai Sahib, With Suspension and Ring, Awarded to Babu Jwala Prasad, on 2<sup>nd</sup> July 1928, *Very Fine, Very Rare*.
- Realised R..... Estimate: R. 18,000 - 20,000
272. Silver Medal 60.7gms. Central Provinces Forest School - Balaghat Calcutta Mint. obv; The Royal arms in Centre on a ribbon above arms. Rev, Awarded to Ramlal Sharma. Puddester 915.9 about *Extremely Fine, Rare*.
- Realised R..... Estimate: R. 18,000 - 20,000
273. Baroda, Silver Olympic Sports Medal Hind Vijay Gymkhana Awarded in 1943 for wt. wresl. *Extremely Fine*.
- Realised R..... Estimate: R. 3,000 - 3,500
274. Baroda, Medal (2) one Silver and one nickel with the portrait of Sayaji Rao Gayakwad *Very Fine, Scarce*. (2)
- Realised R..... Estimate: R. 7,000 - 8,000
275. **Bhavnagar**, Copper, War Hospital Medal, 1916 obv; Portrait of Maharaja and Maharani of Bhavnagar Rev; the Bhavnagar war Hospital building, *Very Fine, Scarce*.
- Realised R..... Estimate: R. 5,000 - 6,000
276. **Bikanir**, Gold Medal 4.6 gm. obv; A ten petal device in white enamel with ten red enamel rays. In the Centre the full face of Ganga Singh, surrounded by a garter with the Devnagari inscription. The whole surmounted by a chhatra. Reverse Plain, Convex. *Extremely Fine, Very Rare*.
- Realised R..... Estimate: R. 30,000 - 40,000
277. Burdhan State, Autographed Silver, Medal, Wt. 54.1 gm. Shirish Chandra Mahtab Bahadur, Coat of Arms of the State on obv, within a wreath, engraved in English, TO / MR. R C BANERJEE / FOR PROFICIENCY IN / HOMEOPATHIC TREATMENT / TO ME AND MY FAMILY / autograph of the King and date / 1.1.50. With a ring. This is the first ever known Medal of a Maharaja whose actual autograph has appeared on the medal. An interesting and rare object not only for medal collectors but also for Autograph collectors. About Extremely Fine, *Extremely Rare*.
- Realised R..... Estimate: R. 40,000 - 50,000

## Badges

278. Bikanir, Silver Badge, 15.8 gm, with full enamel and coloured Portrait of Maharaja *Very Fine*,
- Realised R..... Estimate: R. 3,500 - 4,000
279. England, Silver, Garter Medal, with motto, Honi soit qui mal y pense, its literal translation from Old French is "Shame be to him who thinks evil of it", or more strictly: "Let he who thinks ill there be shamed." It is sometimes re-interpreted as "Evil be to him who evil thinks". Motto around the crest and a Royal crown on obv. Very Fine +, Scarce. The motto has an interesting history: This statement supposedly originated when King Edward III was dancing with his first cousin and daughter-in-law, Joan of Kent. Her garter slipped down to her ankle, causing those around her to snicker at her humiliation. In an act of chivalry Edward placed the garter around his own leg, saying "Honi soit qui mal y pense", and the phrase later became the motto of the Order. *Very Fine*.
- Realised R..... Estimate: R. 12,000 - 15,000

## Token

280. **Bombay Municipal**, Brass Token, dog license no-5219, Dated 1949-50, with Cotofarm *Very Fine, Scare.*

Realised R..... Estimate: R. 1,500 - 2,000

281. **Ramtanka Gold**, 11.50.gms, 17-18 Century. obv; Rama Laxmana and Sita, below is a rabbit and above is Chattr. Rev, Devnagri legend Broad flan, *Very Fine, Extremely Rare type.*

Realised R..... Estimate: R. 60,000 - 70,000

## Paper Money

282. **Bank of Bengal 1000 Rupees**, Type-6 Calcutta hand signed dated 15. April 1853, Personified. Commerce sitting on articles of Merchandise in center above the Central Panel, Value denoted in English, Printed written serial no. Jhun # 3.6.9, Signature uncut hence unusual and *Extremely Rare, Fine +.*

Realised R..... Estimate: R. 1,00,000 - 1,25,000

283. **Government of India**, Unifaced note of Victoria Rupees 5, Green, Bombay Circle, Sign by O.T. Barrow, dated October 3rd 1900. (Jhun # 1.1D.5) *Very Fine +, Rare.*

Realised R..... Estimate: R. 80,000 - 1,00,000

284. **Uniface 5 Rupee**, Red under print, 13 August 1909 Calcutta Circle. Signed **H.F.HOWARD**, few holes on right side (Jhun 1.4B3) *Very Fine.*

Realised R..... Estimate: R. 25,000 - 30,000

285. **British India, Potrait Note of George VI**, 1000 Re, Calcutta Circle. Sign, **J.B.TAYLOR**, Rubber - stamp, both side, ( Jhun 2.1B), *Very Fine, Rare.*

Realised R..... Estimate: R. 90,000 - 1,00,000

286. **Burma, George 5<sup>th</sup> Over Print**, 5Rupees, 10 Rupees, Sign, **J.W. KELLY**, over print on both side, (Jhun 1.1A) ( Jhun 2.1B ) *Very Fine, Scare.*

Realised R..... Estimate: R. 45,000 - 50,000

287. **Burma, George VI**, Rupee 100; 1<sup>st</sup> Issue, Issue from 1947 Calcutta. Signed **C. D. Desmukh**, Red Over Print in center, Burma Currency Bord and Legend tender in Burma only, ( Jhun # 16.1 ) *Very Fine Rare.*

Realised R..... Estimate: R. 40,000 - 50,000

288. **Republic of India**, Rupees 2, Set of 10, Fancy Number note, 100000 to 1000000 Sign R.N.Malhotra, Extremely Fine. (10)

Realised R..... Estimate: R. 15,000 - 20,000

289. **Republic of India**, Rupees 5, Set of 10, Fancy Number note, 111111 to 1000000 Sign R.N.Malhotra, Extremely Fine. (10)

Realised R..... Estimate: R. 20,000 - 22,000

290. **Republic of India**, Rupees 10. Set of 10 Fancy Number Notes 111111 to 1000000.77777777 Number note is of Signature S. jagganath in VF Condition with few rubber stamp mark.

Realised R..... Estimate: R. 20,000 - 22,000





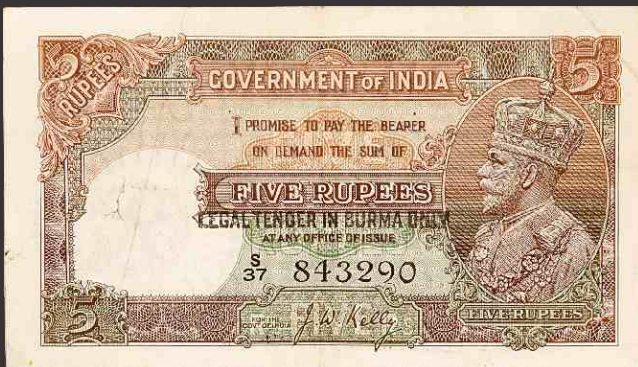
282



283



284



286





279



280



276



273



275



281



270



277



278





266



258



287



285





214



267



271



272



257





# CONDITIONS OF SALE

- 1 The highest bidder of each lot shall be the buyer thereof. In the event of any dispute, the auctioneer shall have absolute Discretion To determine the dispute and may put up again and re-sell the disputed lot.
- 2 The auctioneer shall have absolute discretion to divide any lot, to combine any two or more lots, or to withdraw lots from the sale without giving any reason. The bidding shall be regulated at the absolute discretion of the auctioneer who shall have the right to refuse any bid/s.
- 3 All lots put up for sale are subject to any reserve price that may be imposed by the seller.
- 4 Bidding commissions for anyone unable to attend the auction in person may be carried out by the auctioneer without charge.
- 5 The buyer of any lot shall immediately notify his name and address to the auctioneer and if required,
  - (A) provide bank or other credit references; and
  - (B) pay the full purchase price, or a fractional deposit as may be determined at the discretion of the auctioneer.
6. Lots are sold as shown with all faults, imperfections and errors of description. Neither the auctioneer nor the seller shall give warranty to any buyer in respect of any lot, or be liable for any fault or error of description. All statements as to the items sold, whether made in catalogues, during the course of the auction, or otherwise, are statements of opinion only, and are not and shall not be taken to be statements or representations of fact. The auctioneer reserves the right in forming his opinion, to consult and rely upon any expert or authority considered by him reliable. Notwithstanding the foregoing, if any lot should have been wrongly described in any material aspect, the buyer may reject the same, provided that he shall have given notice of intention to do so and shall have returned the same to the auctioneer within seven (7) Days from the day of the sale. Under no circumstances will the auctioneer be liable for any costs, expenses or damages incurred by the buyer in respect of any lot, including, but not limited to, loss of any kind of profit whatsoever. **Bidders are advised to scrutinize the lots they bid for.**
- 7 The auctioneer acts solely as an agent and shall not be responsible for any default by either the buyer or the seller or for any action or claim which may arise in respect of any lot.
8. Buyers must satisfy themselves as to the accuracy of their purchases at the time of delivery. The auctioneer cannot be held responsible for any discrepancy which might be discovered after the lots have been removed from either the auction room or the auctioneer's premises.
9. The auctioneer will not hold himself responsible for the safe custody of any lots left for more than seven (7) working days after the date of sale, and reserves the right to charge storage and re-sell by auction or privately, and without notice to the buyer, any lots not removed from his premises within fourteen (14) days from the date of sale. Buyers shall not be entitled to remove lots from the auction room during the course of the auction.
10. Each lot shall be at the buyer's risk from the fall of the hammer.
11. Any part of the purchase price left outstanding after the action pursuant to Condition 5, shall be paid in full within seven (7) days of the date of auction. Without prejudice to any rights, the auctioneer reserves the right to charge interest on any overdue payment at the rate of 2-1/2 % per month.
12. **Delivery is against payment.** Delivery of the items will be made on the next day.
13. Credit Card payments are subject to 3% surcharge. Mastercard, Visa and American Express.
14. **A "Buyer's Premium" of 10% is charged on the hammer price (plus any applicable Tax at that time as notified before the start of the auction on the floor).**
15. The estimate figures below each lot are the auctioneer's estimation of an expected price only. These estimates are not representative of a reserve price and are published only as a guide to buyers. Bidders may bid within the estimate or above the estimate, however, bids which are less than the low estimate will not be considered by the auctioneer.
16. The Auction is conducted in **Indian Rupees R.**
17. By making a bid the buyer acknowledges his acceptance of these Conditions and shall be bound by them.
18. These Conditions shall take effect and be construed in accordance with Indian law.
19. Subject to Ahmedabad Jurisdiction.

**Statutory Notes:- Buyers are requested to note that the items over 100 years old cannot be taken out of India without the permission of the Director General, Archaeological Survey of India, Janpath, New Delhi 110 011.**

We Buy & Sell

Old Coin Medals, Tokens & Stamps. Best price paid for top grade items.

Spot payment for single item or entire Collection.

You can also consign your items for our next Auction.

Please write or Visit:- **Classical Numismatic Gallery**

( Antiques License No. 001 )

105, 3rd Eye Complex, C.G. Road, Panchwati, Ahmedabad - 380 006.

Phone : 079-2646 4850 / 2646 4851 Fax : 079-2646 4852. Business Hours - 11:00 am to 7:00 pm

Email: shatrughansaravagi@gmail.com / shatrughansaravagi@yahoo.com







147



210



288



289



290





280



**Classical Numismatic Gallery**

[www.classicalnumismaticgallery.com](http://www.classicalnumismaticgallery.com)